



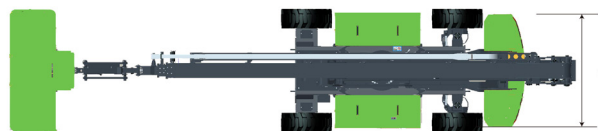
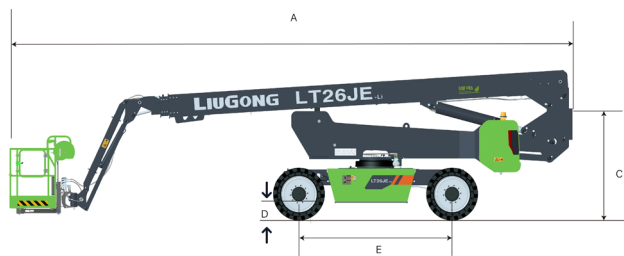
Working Height Max.
Horizontal Reach Max.
Overall Lift Capacity Max.
Overall Width and Length

28.1 m (92'2")
19.28 m (63'3")
300 / 454 kg
(661 / 1000 lb)
2.44 m x 11.03 m
(8' x 36'2")

LT26JE

Telescopic Boom Lifts-Electric

LT26JE SPECIFICATIONS >>>



DIMENSIONS

Working Height Max.	28.1 m (92'2")
Platform Height Max.	26.1 m (85'8")
Operating Amplitude Max.	19.88 m (65'3")
Horizontal Reach Max.	19.28 m (63'3")
Platform Size (LxWxH)	2.44 x 0.91 x 1.1 m (8' x 2'11" x 3'7")
A. Length (Stowed/Transport)	11.03 / 11.31 m (36'2" / 37'1")
B. Width (Stowed/Transport)	2.44 / 2.28 m (8' / 7'6")
C. Height (Stowed/Transport)	2.88 / 2.68 m (9'5" / 8'10")
D. Ground Clearance	0.3 m (11")
E. Wheelbase	3 m (9'10")

PRODUCTIVITY

Overall Lift Capacity Max.	300 / 454 kg (661 / 1000 lb)
Platform Occupancy Max.	2
Platform Rotation	± 90°
Vertical Jib Rotation (Up/Down)	-65° ~ +70°
Turntable Rotation	360° Continuous
Turntable Tailswing (Boom Raised/Stowed)	1.6 / 2.6 m (5'3" / 8'6")
Drive Speed (Stowed)	5 km/h (3.1 mph)
Drive Speed (Raised)	1 km/h (0.6 mph)
Gradeability	45 %
Tilt Sensor Activation (Side to Side/Front to Back)	X 5° / Y 5°
Turning Radius (Inside/Outside)	3.5 / 6.8 m (11'5" / 22'4")
Tire Size (Solid Off-road)	385 / 65 - 24
Drive Steering Type	4WD x 2WS

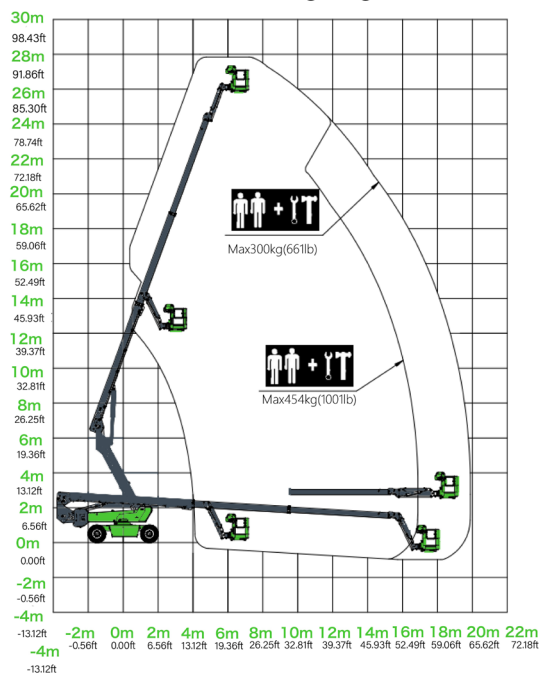
WEIGHT

Overall Weight	15,000 kg (33,069 lb)
----------------	-----------------------

POWER

Battery (Lithium)	83.2 V / 460 Ah
Charger	80 V / 80 A
Lifting Motor	AC 30 kW
Drive Motor	AC 5.2 kW
Auxiliary Power Unit	12 VDC
Hydraulic Tank Capacity	140 L (36 gal)

LT26JE Working Range



Guangxi Liugong Machinery Co., Ltd.

No. 1 Liutai Road, Liuzhou, Guangxi 545007, PR China
T: +86 772 3886124 E: overseas@liugong.com
www.liugong.com

09/2024 Designed by LiuGong

Specifications and designs are subject to change without notice. Machines shown may include optional equipment. LiuGong standard and optional equipment may vary from region to region. Please consult your LiuGong dealer for information specific to your area. Engine power kW is converted to horsepower (1 kW=1.3596 ps and 1 kW=1.3410 hp) in this file.